

NORTH YORKSHIRE MOORS NATIONAL PARK

HOWARDIAN HILLS AONB

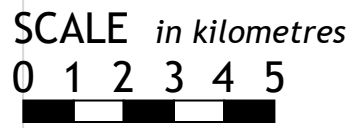
HIGH SPEED UK : REGIONAL MAPS

CC12 : VALE OF YORK

© NETWORK 2020 MAPPING NOV 2023

FOR EXPLANATION OF SYMBOLS IN HSUK MAPPING SEE KEY PLAN K01

FOR FURTHER INFO SEE HSUK NORTH COUNTRY RAIL STRATEGY



ECML FAST LINES UPGRADED TO HIGH SPEED, WITH MINOR DEVIATIONS AT CURVES

NOTE POSSIBILITY OF NEW 'LEEDS NORTHERN' SERVICE ALONG A1(M)-ALIGNED FREIGHT ROUTE, LINKING LEEDS-HARROGATE-KNARESBOROUGH-BOROUGHBRIDGE-NORTHALLERTON-MIDDLESBROUGH

POTENTIAL NEW FREIGHT ROUTE FOLLOWING A1(M), GENERALLY ALONG CLEAR CORRIDOR BETWEEN NEW MOTORWAY AND FORMER ROUTE (NOW A168)

NEW COMMUTER SERVICES TO SUBURBAN COMMUNITIES. PRECISE STATION LOCATIONS TO BE DETERMINED

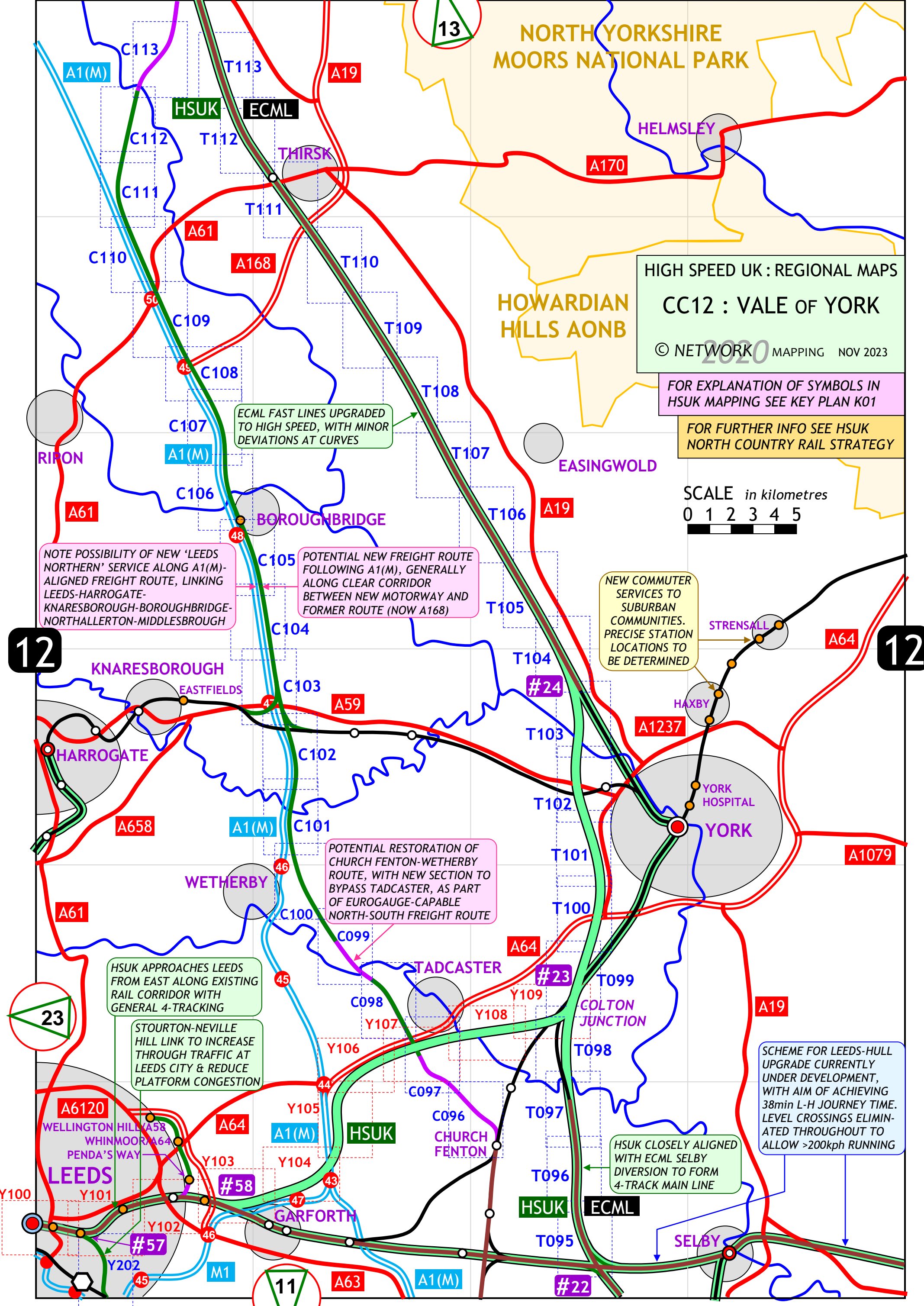
POTENTIAL RESTORATION OF CHURCH FENTON-WETHERBY ROUTE, WITH NEW SECTION TO BYPASS TADCASTER, AS PART OF EUROGAUGE-CAPABLE NORTH-SOUTH FREIGHT ROUTE

HSUK APPROACHES LEEDS FROM EAST ALONG EXISTING RAIL CORRIDOR WITH GENERAL 4-TRACKING

STOURTON-NEVILLE HILL LINK TO INCREASE THROUGH TRAFFIC AT LEEDS CITY & REDUCE PLATFORM CONGESTION

HSUK CLOSELY ALIGNED WITH ECML SELBY DIVERSION TO FORM 4-TRACK MAIN LINE

SCHEME FOR LEEDS-HULL UPGRADE CURRENTLY UNDER DEVELOPMENT, WITH AIM OF ACHIEVING 38min L-H JOURNEY TIME. LEVEL CROSSINGS ELIMINATED THROUGHOUT TO ALLOW >200kph RUNNING



12

12

23

11

13

A1(M)

HSUK

ECML

A19

A170

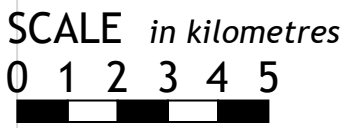
HIGH SPEED UK : REGIONAL MAPS

CC12 : VALE OF YORK

© NETWORK 2020 MAPPING NOV 2023

FOR EXPLANATION OF SYMBOLS IN HSUK MAPPING SEE KEY PLAN K01

FOR FURTHER INFO SEE HSUK NORTH COUNTRY RAIL STRATEGY



ECML FAST LINES UPGRADED TO HIGH SPEED, WITH MINOR DEVIATIONS AT CURVES

NOTE POSSIBILITY OF NEW 'LEEDS NORTHERN' SERVICE ALONG A1(M)-ALIGNED FREIGHT ROUTE, LINKING LEEDS-HARROGATE-KNARESBOROUGH-BOROUGHBRIDGE-NORTHALLERTON-MIDDLESBROUGH

POTENTIAL NEW FREIGHT ROUTE FOLLOWING A1(M), GENERALLY ALONG CLEAR CORRIDOR BETWEEN NEW MOTORWAY AND FORMER ROUTE (NOW A168)

NEW COMMUTER SERVICES TO SUBURBAN COMMUNITIES. PRECISE STATION LOCATIONS TO BE DETERMINED

POTENTIAL RESTORATION OF CHURCH FENTON-WETHERBY ROUTE, WITH NEW SECTION TO BYPASS TADCASTER, AS PART OF EUROGAUGE-CAPABLE NORTH-SOUTH FREIGHT ROUTE

HSUK APPROACHES LEEDS FROM EAST ALONG EXISTING RAIL CORRIDOR WITH GENERAL 4-TRACKING

STOURTON-NEVILLE HILL LINK TO INCREASE THROUGH TRAFFIC AT LEEDS CITY & REDUCE PLATFORM CONGESTION

HSUK CLOSELY ALIGNED WITH ECML SELBY DIVERSION TO FORM 4-TRACK MAIN LINE

SCHEME FOR LEEDS-HULL UPGRADE CURRENTLY UNDER DEVELOPMENT, WITH AIM OF ACHIEVING 38min L-H JOURNEY TIME. LEVEL CROSSINGS ELIMINATED THROUGHOUT TO ALLOW >200kph RUNNING

12

12

23

11

13

A1(M)

HSUK

ECML

A19

A170

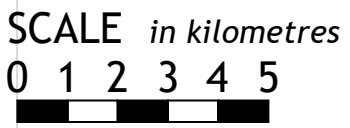
HIGH SPEED UK : REGIONAL MAPS

CC12 : VALE OF YORK

© NETWORK 2020 MAPPING NOV 2023

FOR EXPLANATION OF SYMBOLS IN HSUK MAPPING SEE KEY PLAN K01

FOR FURTHER INFO SEE HSUK NORTH COUNTRY RAIL STRATEGY



ECML FAST LINES UPGRADED TO HIGH SPEED, WITH MINOR DEVIATIONS AT CURVES

NOTE POSSIBILITY OF NEW 'LEEDS NORTHERN' SERVICE ALONG A1(M)-ALIGNED FREIGHT ROUTE, LINKING LEEDS-HARROGATE-KNARESBOROUGH-BOROUGHBRIDGE-NORTHALLERTON-MIDDLESBROUGH

POTENTIAL NEW FREIGHT ROUTE FOLLOWING A1(M), GENERALLY ALONG CLEAR CORRIDOR BETWEEN NEW MOTORWAY AND FORMER ROUTE (NOW A168)

NEW COMMUTER SERVICES TO SUBURBAN COMMUNITIES. PRECISE STATION LOCATIONS TO BE DETERMINED

POTENTIAL RESTORATION OF CHURCH FENTON-WETHERBY ROUTE, WITH NEW SECTION TO BYPASS TADCASTER, AS PART OF EUROGAUGE-CAPABLE NORTH-SOUTH FREIGHT ROUTE

HSUK APPROACHES LEEDS FROM EAST ALONG EXISTING RAIL CORRIDOR WITH GENERAL 4-TRACKING

STOURTON-NEVILLE HILL LINK TO INCREASE THROUGH TRAFFIC AT LEEDS CITY & REDUCE PLATFORM CONGESTION

HSUK CLOSELY ALIGNED WITH ECML SELBY DIVERSION TO FORM 4-TRACK MAIN LINE

SCHEME FOR LEEDS-HULL UPGRADE CURRENTLY UNDER DEVELOPMENT, WITH AIM OF ACHIEVING 38min L-H JOURNEY TIME. LEVEL CROSSINGS ELIMINATED THROUGHOUT TO ALLOW >200kph RUNNING